

MONTHLY MEMBERSHIP PROGRESS REPORT

LOCATION REP OF SRI LANKA

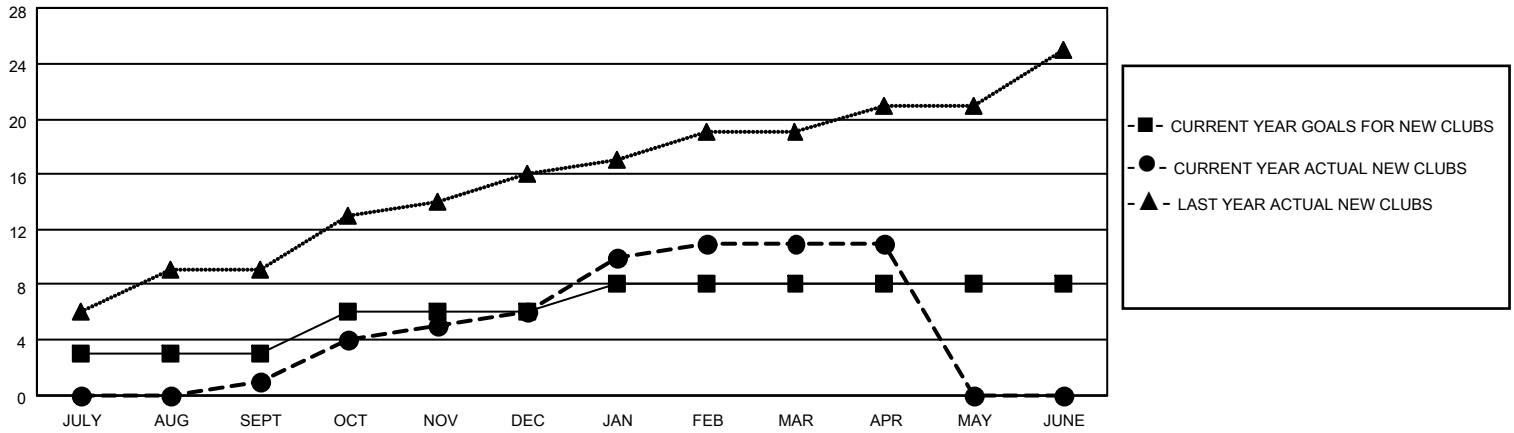
District 306 B2

Results as of: 4/30/2023

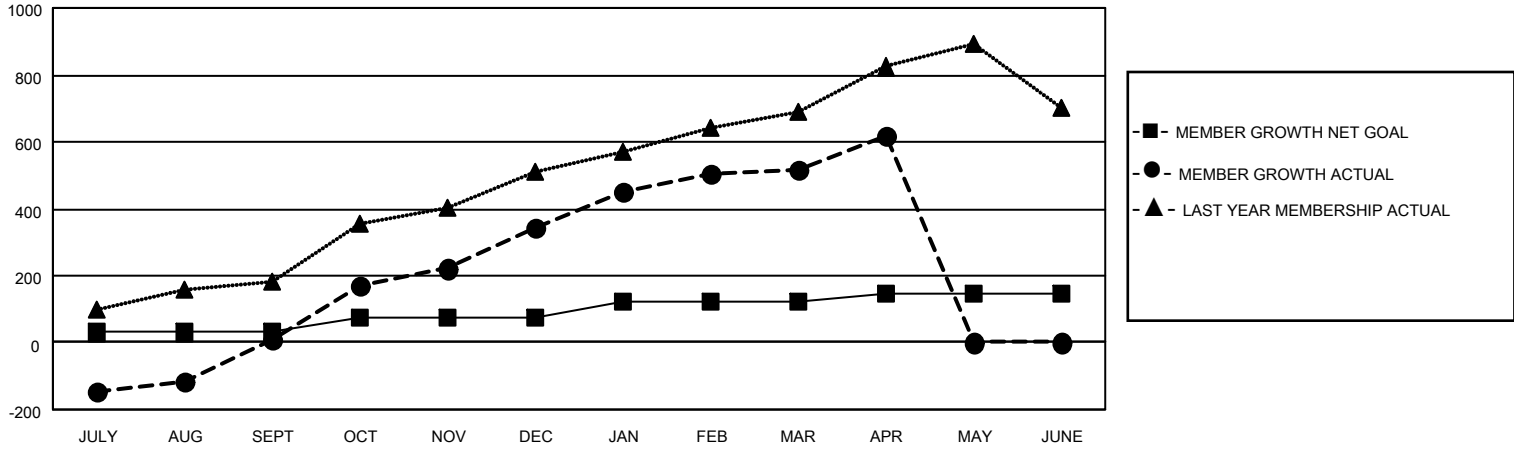
Clubs			
RESULTS FOR 2022-2023			
QUARTER	NEW CLUB GOAL	NEW CLUBS	DROPPED CLUBS
JULY/AUG/SEPT	3	1	6
OCT/NOV/DEC	3	5	0
JAN/FEB/MAR	2	5	0
APR/MAY/JUNE	0	0	0

Members			
RESULTS FOR 2022-2023			
QUARTER	MEMBER GROWTH NET GOAL	MEMBER GROWTH ACTUAL	DROPPED MEMBERS ACTUAL (including transfers)
JULY/AUG/SEPT	30	223	193
OCT/NOV/DEC	45	506	155
JAN/FEB/MAR	50	242	48
APR/MAY/JUNE	20	119	18

GOALS AND ACTUAL NEW CLUBS CUMULATIVE



GOALS AND ACTUAL MEMBERS CUMULATIVE



DROPPED CLUBS: 6	
<u>DROPPED MEMBERS</u>	
DECEASED	9
CLUB CANCELLED	124
OTHER	281
TOTAL	414

115 CLUBS OF 141 ADDED 1 OR MORE NEW MEMBERS

[CLICK HERE FOR CUMULATIVE MEMBERSHIP DATA](#)

<u>GENDER DISTRIBUTION</u>	
MALE	3,030 (71.08%)
FEMALE	1,233 (28.92%)
NON BINARY	0 (0.00%)
PREFER NOT TO ANSWER	0 (0.00%)
TOTAL FAMILY UNIT MEMBERS	1,770
FAMILY MEMBERS PAYING HALF DUES	997